



Asada Lisboa
Informe Revision Pozo

9/4/2021



SERVIPOZOS S.A.

- Instalación Bombas • Extracción Bombas •
- Limpieza - Desarrollo Pozos • Instalaciones Eléctricas •
- Diagnóstico de Pozos • Pruebas de Bombeo •

San José, 09 de Abril de 2021

Srs
Acueducto Lisboa
Pte

Asunto: **INFORME AFORO Y REVISIÓN FUNCIONAMIENTO EQUIPOS DE BOMBEO**

Estimados Srs:

Le detallo información de la revisión realizada el día 08 de Abril en el pozo que abastece la Urbanización

Nivel estático: 80.03 m

Nivel dinámico: 80.36 m

Caudal: 11.76 l.p.s – bombeando al tanque y medido con el hidrómetro

Caudal _ 13.50 l.p.s – bombeando a la par del pozo

Voltaje con equipos apagados: 470 – 471 – 466

Voltaje con equipos funcionando: 460 – 461 - 462

Amperaje de trabajo: 36 – 36 – 36

Aislamiento a tierra: 7.00 megaohmios

Presión línea pozo – tanque de almacenamiento: 25 psi

OBSERVACIONES Y RECOMENDACIONES:

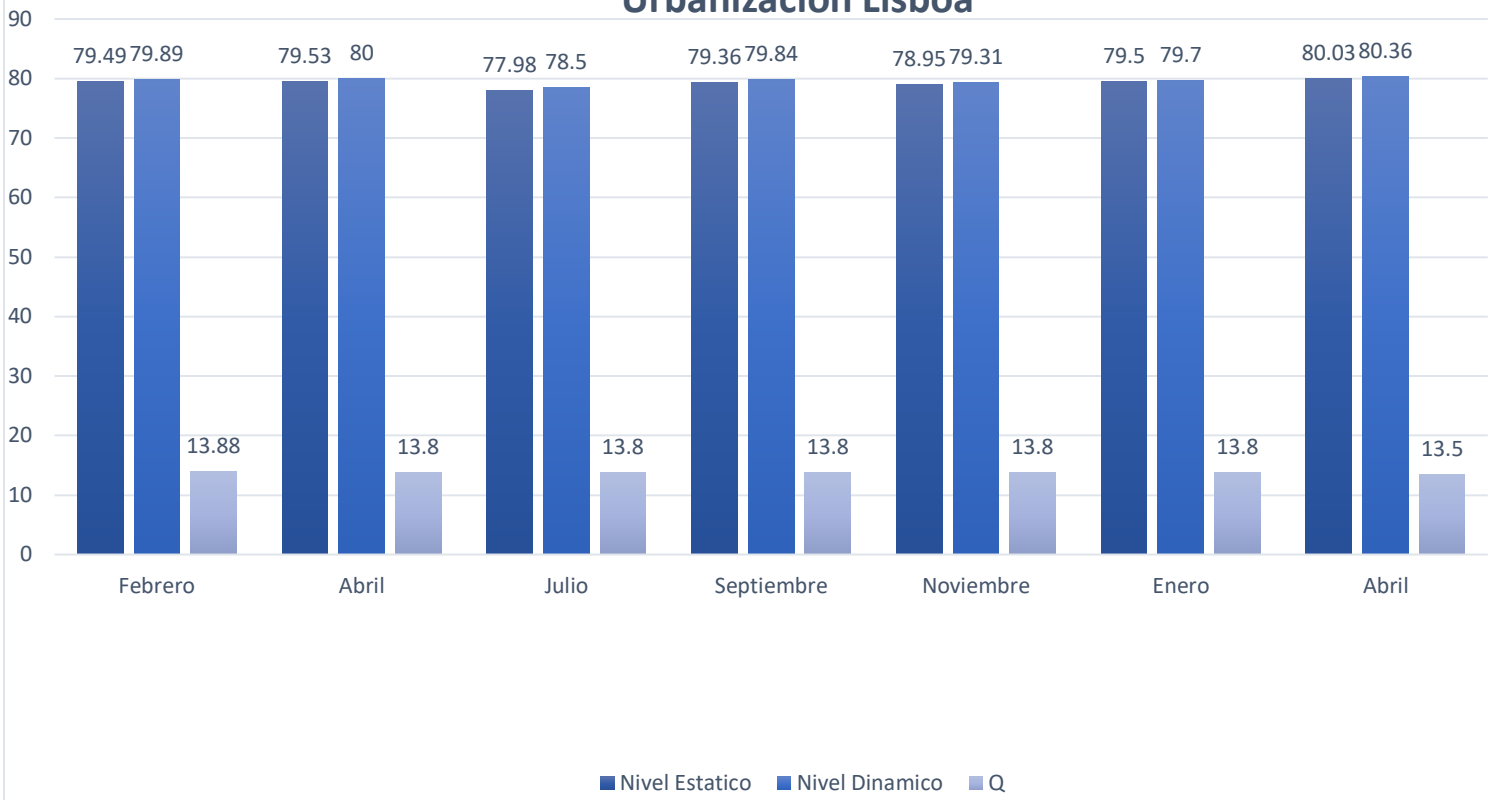
1. Las condiciones hidráulicas, eléctricas del pozo y equipos de bombeo se encuentran trabajando con normalidad y dentro del rango recomendado por el fabricante.
2. El aislamiento da valores buenos
3. El nivel estático y dinámico muestran un comportamiento normal
4. Se realizó medición de caudal a descarga abierta, y luego a 25 psi que es la carga que tiene que vencer la bomba entre pozo – tanque de almacenamiento y da valores similares a las que suministra el hidrómetro, por lo tanto carga total: $80 + 18 = 98$ m – 100 m
5. Se tomaron imágenes térmicas del panel y sus componentes. Primero se procedió a apagar el panel dejarlo unos minutos en reposo y tomar imágenes. Posterior a esto se encendió se le dio unos minutos y se tomaron imágenes nuevamente. Como es de esperar la temperatura sube un poco al estar trabajando, pero dentro de un rango adecuado. Lo que mas genera calor es el contactor y relee sin embargo esta dentro de su rango de operación.

Adjunto gráfico comparativo

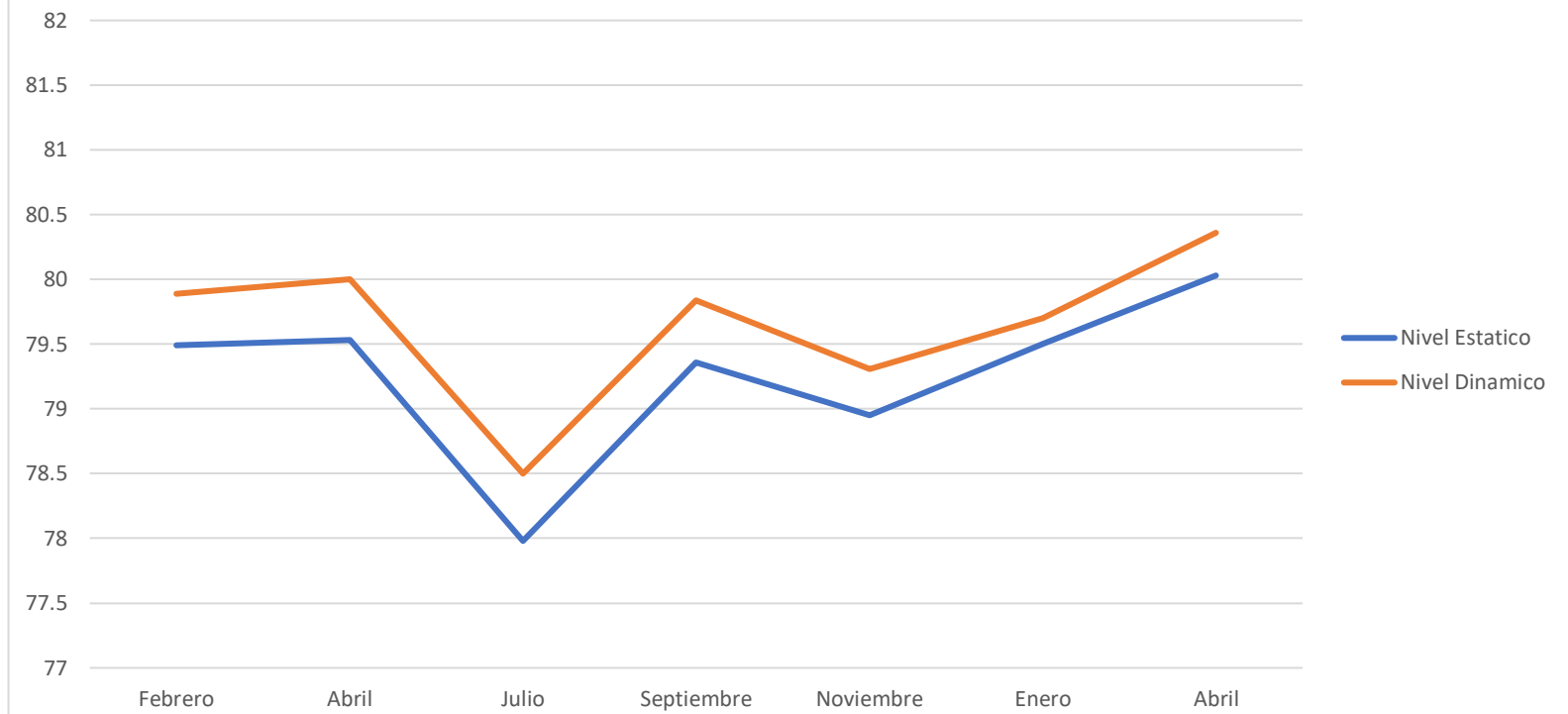
Atentamente

Ing Rodolfo Aguilar I

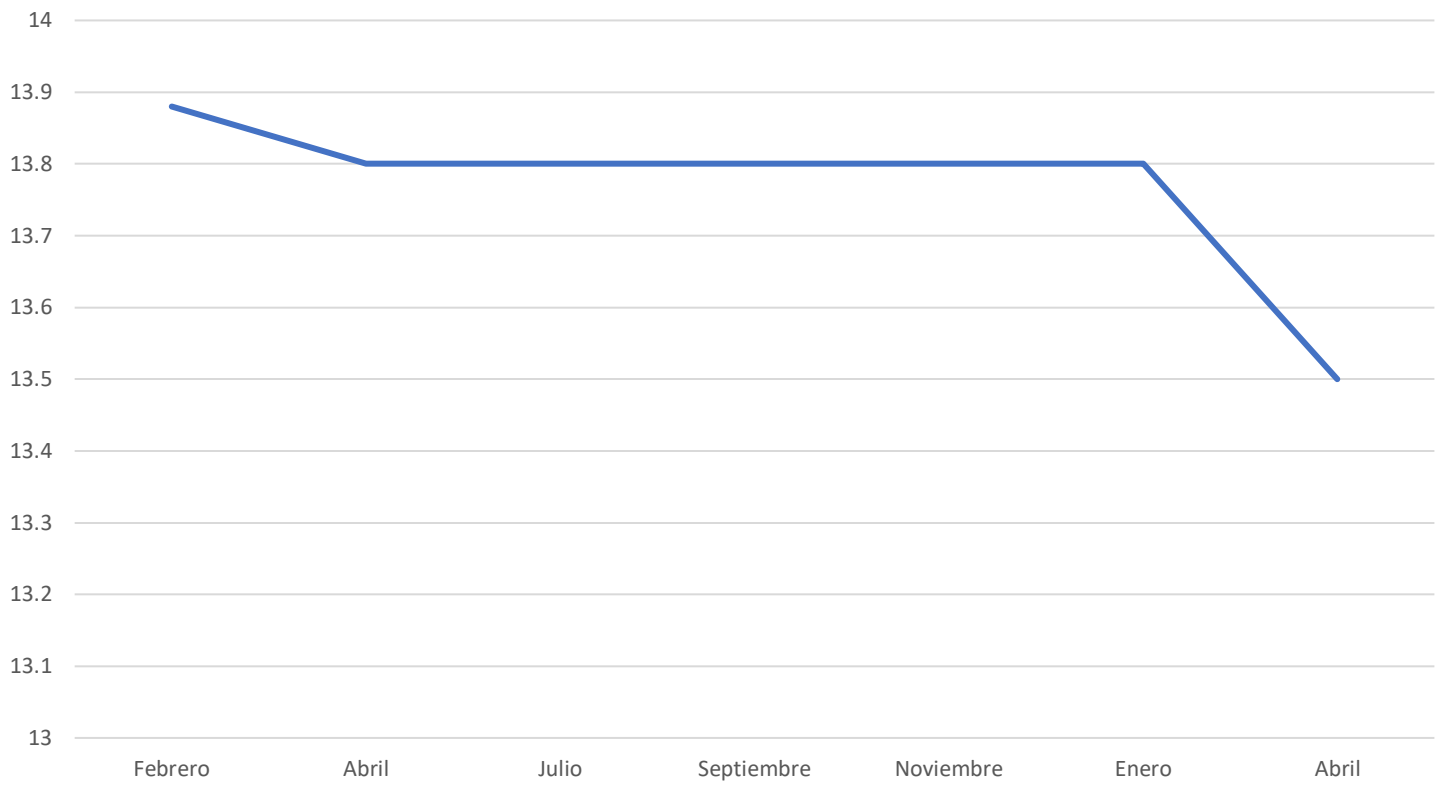
Urbanizacion Lisboa



Nivel Estatico y Dinamico



Caudal



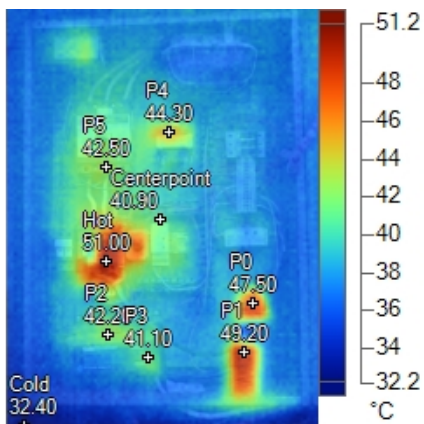


Image Info

Background Temperature	22.0 °C
Emissivity	0.98
Transmission	1.00
Average Temperature	38.4 °C
Calibration Range	-10.00 °C to 150.00 °C
Camera Manufacturer	Fluke Corporation
Image Time	4/8/2021 10:30:12 AM

Marker Info

Marker Name	Maximum	Minimum	Average	Emissivity	BG Temp	Std.Dev
Hot	51.0 °C	51.0 °C	51.0 °C	0.98	22.0 °C	0.00
Cold	32.4 °C	32.4 °C	32.4 °C	0.98	22.0 °C	0.00
Centerpoint	40.9 °C	40.9 °C	40.9 °C	0.98	22.0 °C	0.00
Centerbox	51.0 °C	36.8 °C	40.5 °C	0.98	22.0 °C	2.59
P0	47.5 °C	47.5 °C	47.5 °C	0.98	22.0 °C	0.00
P1	49.2 °C	49.2 °C	49.2 °C	0.98	22.0 °C	0.00
P2	42.2 °C	42.2 °C	42.2 °C	0.98	22.0 °C	0.00
P3	41.1 °C	41.1 °C	41.1 °C	0.98	22.0 °C	0.00
P4	44.3 °C	44.3 °C	44.3 °C	0.98	22.0 °C	0.00
P5	42.5 °C	42.5 °C	42.5 °C	0.98	22.0 °C	0.00
A0	51.0 °C	34.1 °C	39.2 °C	0.98	22.0 °C	2.57

Notes

Description
Panel apagado

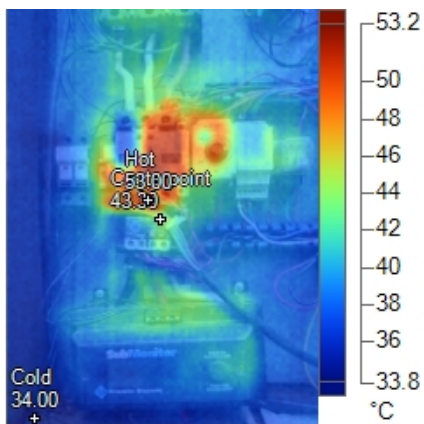


Image Info

Background Temperature	22.0 °C
Emissivity	0.98
Transmission	1.00
Average Temperature	39.5 °C
Calibration Range	-10.00 °C to 150.00 °C
Camera Manufacturer	Fluke Corporation
Image Time	4/8/2021 10:31:15 AM

Marker Info

Marker Name	Maximum	Minimum	Average	Emissivity	BG Temp	Std.Dev
Hot	53.0 °C	53.0 °C	53.0 °C	0.98	22.0 °C	0.00
Cold	34.0 °C	34.0 °C	34.0 °C	0.98	22.0 °C	0.00
Centerpoint	43.3 °C	43.3 °C	43.3 °C	0.98	22.0 °C	0.00
Centerbox	53.0 °C	36.2 °C	42.6 °C	0.98	22.0 °C	3.86

Notes

Description
Panel Apagado: Contactor y Rele con mayor temperatura dentro lo normal

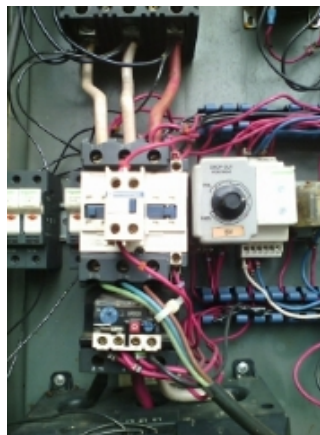
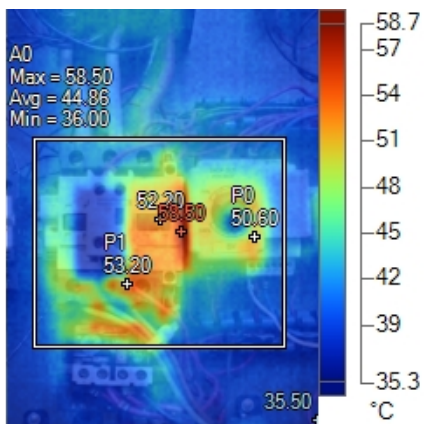


Image Info

Background Temperature	22.0 °C
Emissivity	0.98
Transmission	1.00
Average Temperature	41.9 °C
Calibration Range	-10.00 °C to 150.00 °C
Camera Manufacturer	Fluke Corporation
Image Time	4/8/2021 10:31:23 AM

Marker Info

Marker Name	Maximum	Minimum	Average	Emissivity	BG Temp	Std.Dev
Hot	58.5 °C	58.5 °C	58.5 °C	0.98	22.0 °C	0.00
Cold	35.5 °C	35.5 °C	35.5 °C	0.98	22.0 °C	0.00
Centerpoint	52.2 °C	52.2 °C	52.2 °C	0.98	22.0 °C	0.00
Centerbox	58.5 °C	36.0 °C	45.8 °C	0.98	22.0 °C	4.65
P0	50.6 °C	50.6 °C	50.6 °C	0.98	22.0 °C	0.00
P1	53.2 °C	53.2 °C	53.2 °C	0.98	22.0 °C	0.00
A0	58.5 °C	36.0 °C	44.9 °C	0.98	22.0 °C	4.54

Notes

Description

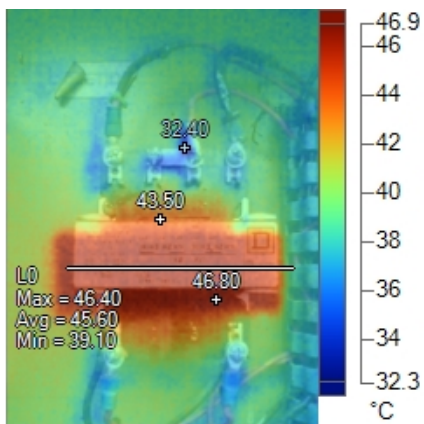


Image Info

Background Temperature	22.0 °C
Emissivity	0.98
Transmission	1.00
Average Temperature	40.2 °C
Calibration Range	-10.00 °C to 150.00 °C
Camera Manufacturer	Fluke Corporation
Image Time	4/8/2021 10:31:44 AM

Marker Info

Marker Name	Maximum	Minimum	Average	Emissivity	BG Temp	Std.Dev
Hot	46.8 °C	46.8 °C	46.8 °C	0.98	22.0 °C	0.00
Cold	32.4 °C	32.4 °C	32.4 °C	0.98	22.0 °C	0.00
Centerpoint	43.5 °C	43.5 °C	43.5 °C	0.98	22.0 °C	0.00
Centerbox	46.8 °C	32.4 °C	42.2 °C	0.98	22.0 °C	3.50
L0	46.4 °C	39.1 °C	45.6 °C	0.98	22.0 °C	1.38

Notes

Description

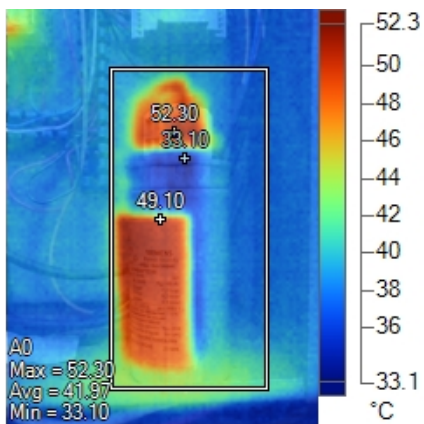


Image Info

Background Temperature	22.0 °C
Emissivity	0.98
Transmission	1.00
Average Temperature	39.9 °C
Calibration Range	-10.00 °C to 150.00 °C
Camera Manufacturer	Fluke Corporation
Image Time	4/8/2021 10:31:56 AM

Marker Info

Marker Name	Maximum	Minimum	Average	Emissivity	BG Temp	Std.Dev
Hot	52.3 °C	52.3 °C	52.3 °C	0.98	22.0 °C	0.00
Cold	33.1 °C	33.1 °C	33.1 °C	0.98	22.0 °C	0.00
Centerpoint	49.1 °C	49.1 °C	49.1 °C	0.98	22.0 °C	0.00
Centerbox	52.3 °C	33.1 °C	41.9 °C	0.98	22.0 °C	5.40
A0	52.3 °C	33.1 °C	42.0 °C	0.98	22.0 °C	4.99

Notes

Description

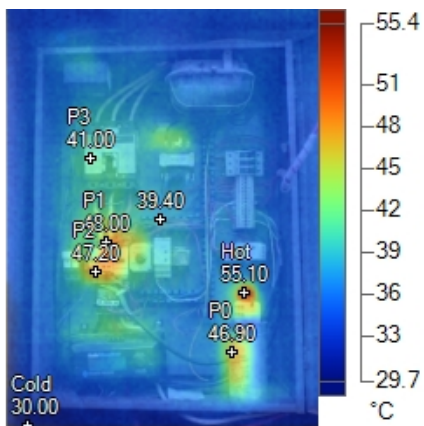


Image Info

Background Temperature	22.0 °C
Emissivity	0.98
Transmission	1.00
Average Temperature	36.6 °C
Calibration Range	-10.00 °C to 150.00 °C
Camera Manufacturer	Fluke Corporation
Image Time	4/8/2021 10:39:16 AM

Marker Info

Marker Name	Maximum	Minimum	Average	Emissivity	BG Temp	Std.Dev
Hot	55.1 °C	55.1 °C	55.1 °C	0.98	22.0 °C	0.00
Cold	30.0 °C	30.0 °C	30.0 °C	0.98	22.0 °C	0.00
Centerpoint	39.4 °C	39.4 °C	39.4 °C	0.98	22.0 °C	0.00
Centerbox	52.9 °C	34.6 °C	39.2 °C	0.98	22.0 °C	2.57
P0	46.9 °C	46.9 °C	46.9 °C	0.98	22.0 °C	0.00
P1	48.0 °C	48.0 °C	48.0 °C	0.98	22.0 °C	0.00
P2	47.2 °C	47.2 °C	47.2 °C	0.98	22.0 °C	0.00
P3	41.0 °C	41.0 °C	41.0 °C	0.98	22.0 °C	0.00

Notes

Description
Panel encendido

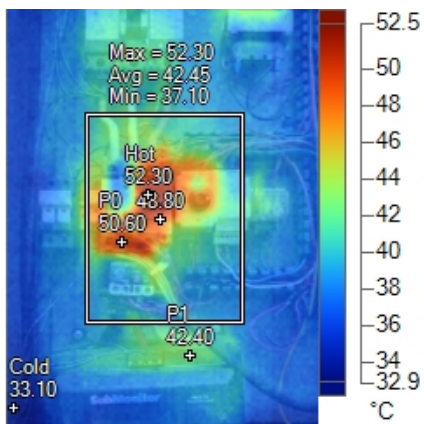


Image Info

Background Temperature	22.0 °C
Emissivity	0.98
Transmission	1.00
Average Temperature	39.3 °C
Calibration Range	-10.00 °C to 150.00 °C
Camera Manufacturer	Fluke Corporation
Image Time	4/8/2021 10:39:29 AM

Marker Info

Marker Name	Maximum	Minimum	Average	Emissivity	BG Temp	Std.Dev
Hot	52.3 °C	52.3 °C	52.3 °C	0.98	22.0 °C	0.00
Cold	33.1 °C	33.1 °C	33.1 °C	0.98	22.0 °C	0.00
Centerpoint	48.8 °C	48.8 °C	48.8 °C	0.98	22.0 °C	0.00
Centerbox	52.3 °C	37.1 °C	42.4 °C	0.98	22.0 °C	3.56
P0	50.6 °C	50.6 °C	50.6 °C	0.98	22.0 °C	0.00
P1	42.4 °C	42.4 °C	42.4 °C	0.98	22.0 °C	0.00

Notes

Description

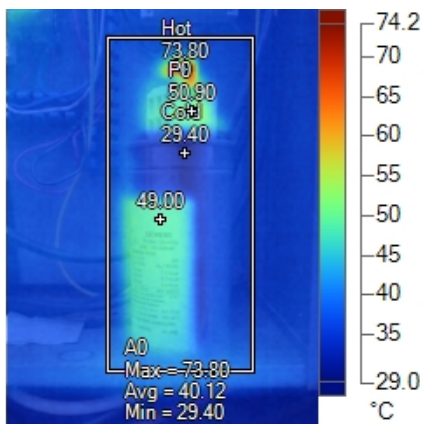


Image Info

Background Temperature	22.0 °C
Emissivity	0.98
Transmission	1.00
Average Temperature	37.7 °C
Calibration Range	-10.00 °C to 150.00 °C
Camera Manufacturer	Fluke Corporation
Image Time	4/8/2021 10:39:38 AM

Marker Info

Marker Name	Maximum	Minimum	Average	Emissivity	BG Temp	Std.Dev
Hot	73.8 °C	73.8 °C	73.8 °C	0.98	22.0 °C	0.00
Cold	29.4 °C	29.4 °C	29.4 °C	0.98	22.0 °C	0.00
Centerpoint	49.0 °C	49.0 °C	49.0 °C	0.98	22.0 °C	0.00
Centerbox	52.2 °C	29.4 °C	39.6 °C	0.98	22.0 °C	5.20
A0	73.8 °C	29.4 °C	40.1 °C	0.98	22.0 °C	5.42
P0	50.9 °C	50.9 °C	50.9 °C	0.98	22.0 °C	0.00

Notes

Description

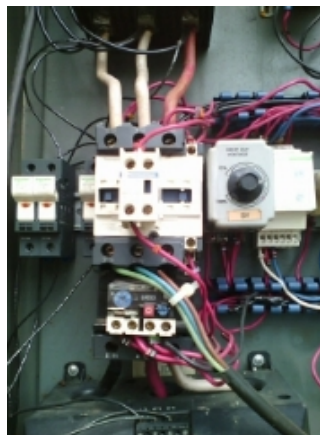
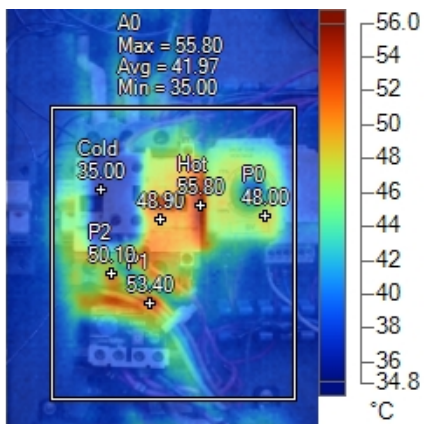


Image Info

Background Temperature	22.0 °C
Emissivity	0.98
Transmission	1.00
Average Temperature	40.3 °C
Calibration Range	-10.00 °C to 150.00 °C
Camera Manufacturer	Fluke Corporation
Image Time	4/8/2021 10:40:05 AM

Marker Info

Marker Name	Maximum	Minimum	Average	Emissivity	BG Temp	Std.Dev
Hot	55.8 °C	55.8 °C	55.8 °C	0.98	22.0 °C	0.00
Cold	35.0 °C	35.0 °C	35.0 °C	0.98	22.0 °C	0.00
Centerpoint	48.9 °C	48.9 °C	48.9 °C	0.98	22.0 °C	0.00
Centerbox	55.8 °C	35.0 °C	44.2 °C	0.98	22.0 °C	4.58
A0	55.8 °C	35.0 °C	42.0 °C	0.98	22.0 °C	4.31
P0	48.0 °C	48.0 °C	48.0 °C	0.98	22.0 °C	0.00
P1	53.4 °C	53.4 °C	53.4 °C	0.98	22.0 °C	0.00
P2	50.1 °C	50.1 °C	50.1 °C	0.98	22.0 °C	0.00

Notes

Description

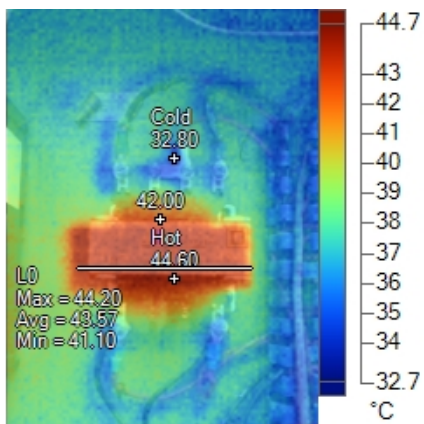


Image Info

Background Temperature	22.0 °C
Emissivity	0.98
Transmission	1.00
Average Temperature	38.0 °C
Calibration Range	-10.00 °C to 150.00 °C
Camera Manufacturer	Fluke Corporation
Image Time	4/8/2021 10:40:12 AM

Marker Info

Marker Name	Maximum	Minimum	Average	Emissivity	BG Temp	Std.Dev
Hot	44.6 °C	44.6 °C	44.6 °C	0.98	22.0 °C	0.00
Cold	32.8 °C	32.8 °C	32.8 °C	0.98	22.0 °C	0.00
Centerpoint	42.0 °C	42.0 °C	42.0 °C	0.98	22.0 °C	0.00
Centerbox	44.6 °C	32.8 °C	40.0 °C	0.98	22.0 °C	2.91
L0	44.2 °C	41.1 °C	43.6 °C	0.98	22.0 °C	0.52

Notes

Description
